



GMT MONTHLY MEMBERSHIP PROGRESS REPORT

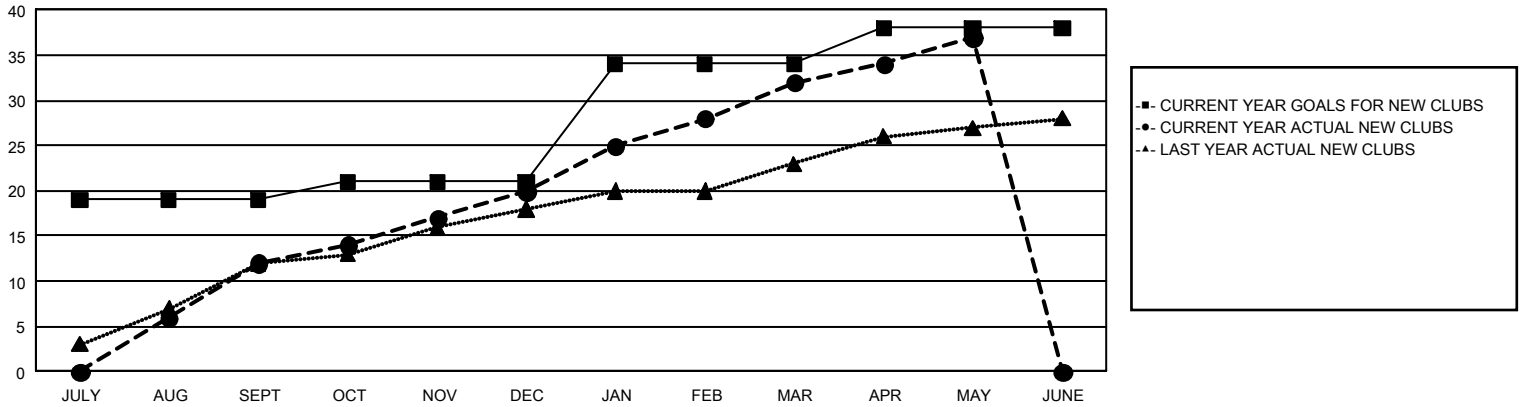
GAT Constitutional Area 5 - Korea

Results as of: 5/31/2024

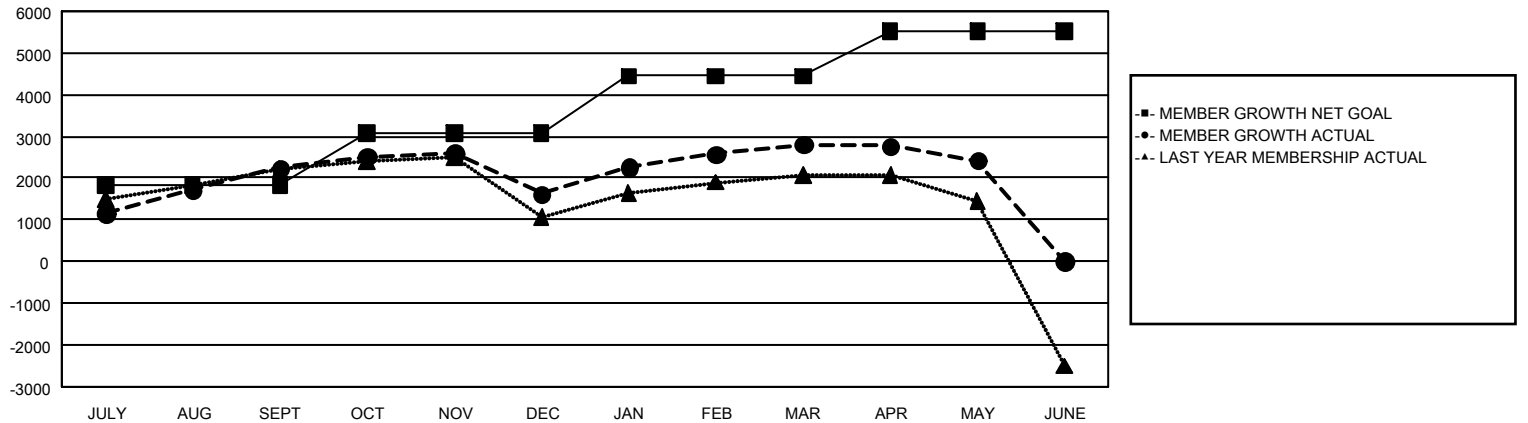
REPORT DOES NOT INCLUDE CLUBS IN UNDISTRICTED AREAS.

Clubs				Members			
RESULTS FOR 2023-2024				RESULTS FOR 2023-2024			
QUARTER	NEW CLUB GOAL	NEW CLUBS	DROPPED CLUBS	QUARTER	MEMBER GROWTH NET GOAL	MEMBER GROWTH ACTUAL	DROPPED MEMBERS ACTUAL (including transfers)
JULY/AUG/SEPT	19	12	9	JULY/AUG/SEPT	1,828	4,741	2,248
OCT/NOV/DEC	2	8	14	OCT/NOV/DEC	1,256	2,235	2,739
JAN/FEB/MAR	13	12	2	JAN/FEB/MAR	1,363	2,570	1,251
APR/MAY/JUNE	4	5	5	APR/MAY/JUNE	1,085	981	1,271

GOALS AND ACTUAL NEW CLUBS CUMULATIVE



GOALS AND ACTUAL MEMBERS CUMULATIVE



DROPPED CLUBS: 28	1,645 CLUBS OF 2,048 ADDED 1 OR MORE NEW MEMBERS	<u>GENDER DISTRIBUTION</u>	
<u>DROPPED MEMBERS</u>		MALE	53,543 (73.51%)
DECEASED	223	FEMALE	19,287 (26.48%)
CLUB CANCELLED	221	TOTAL FAMILY UNIT MEMBERS 4,003	
OTHER	7,039		
TOTAL	7,483		
CLICK HERE FOR CUMULATIVE MEMBERSHIP DATA		FAMILY MEMBERS PAYING HALF DUES 2,311	